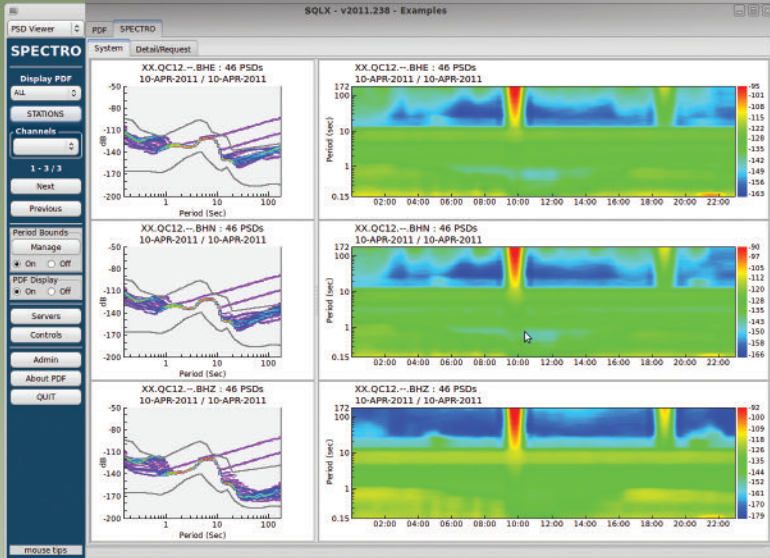


**Indispensable** quality control tool for seismologists and network operators

# SQLX

## Quality Assessment Tool



Even deployments that appear to be functioning normally may not be producing usable seismic data. To help seismologists and network operators receive the utmost utility from their seismic deployments, SQLX calculates trace statistics, power spectral densities (PSD) and probability density functions (PDF) using waveform data and instrument response files in the frequency and time domains.

For example...

- SQLX can compare noise levels at different stations, and provide an assessment of the expected baseline at each station, per channel
- SQLX can identify changes in noise that may be occurring at stations over time due to unexpected, external factors that change the baseline.
  - Nearby mechanicals (water pump, equipment, etc.)
  - Intermittent transportation (trains, planes, ships, etc.)
  - Weather, ocean waves, calving glaciers
- Are there unknown “cultural” noise influences affecting the baseline in a certain frequency domain or at specific periods? If so, SQLX can be used to identify these influences before critical data are affected.
- SQLX can be used to analyze meta-data to ensure that response files are an accurate reflection of the instrument.
- PDF and time domain data views created with SQLX identify gaps and overlaps in your data caused by telemetry or equipment issues. This allows operators to address quality issues before key data is compromised.

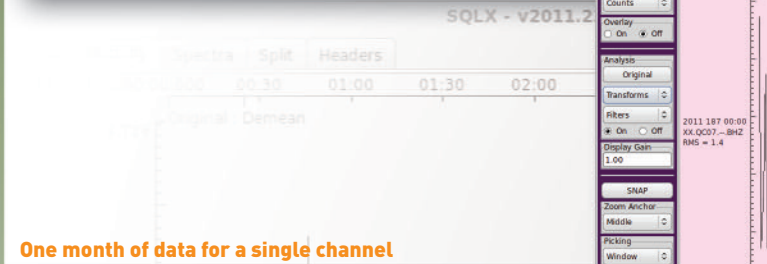
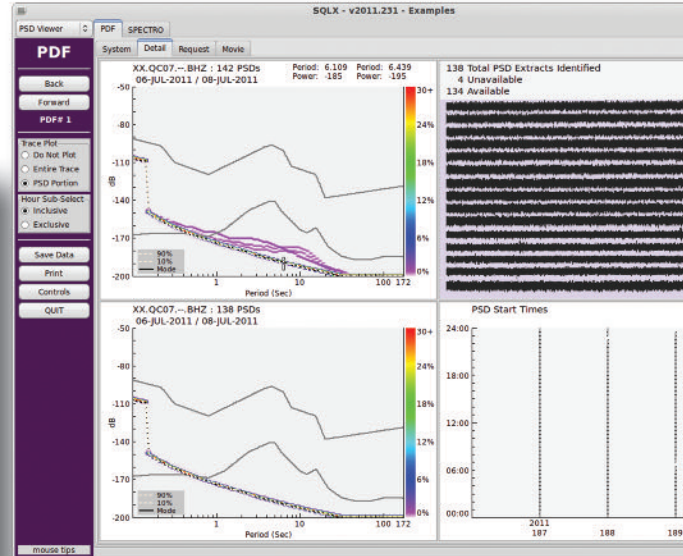
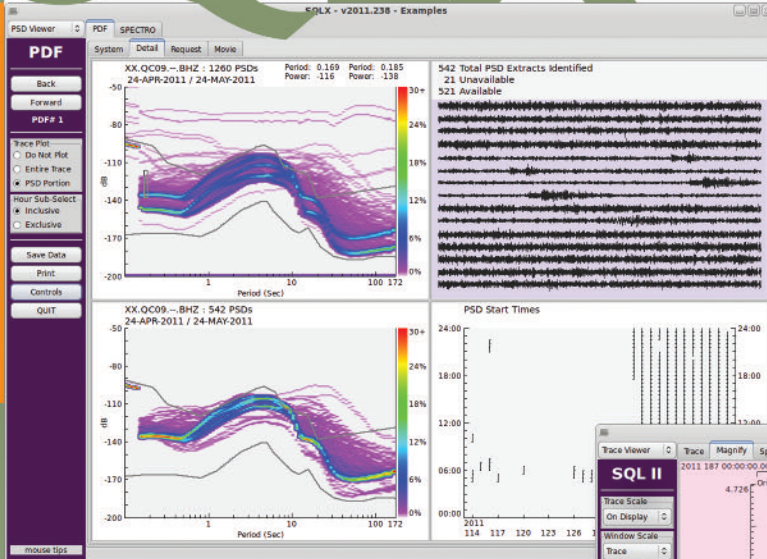
DOWNLOAD THE TRIAL VERSION for the new release of SQLX at the Nanometrics website. Sample Data is included to help demonstrate the new functionality.

<http://www.nanometrics.ca/products/sqlx>

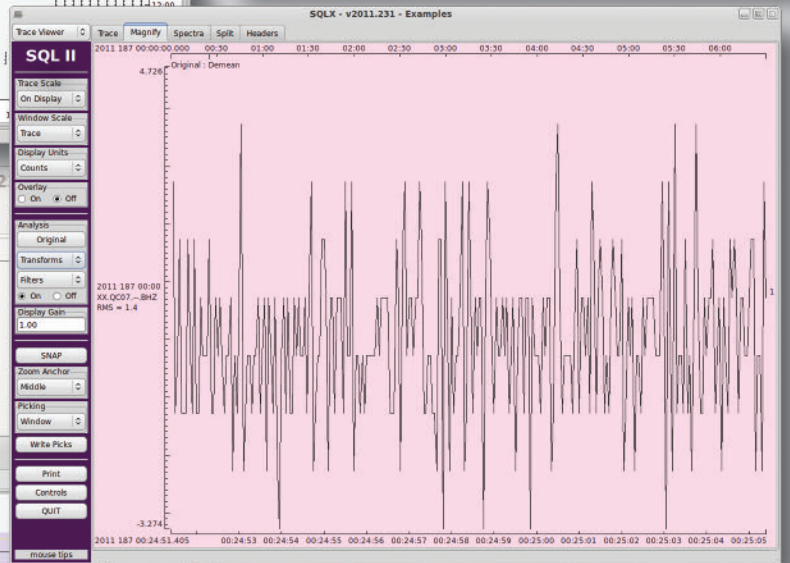
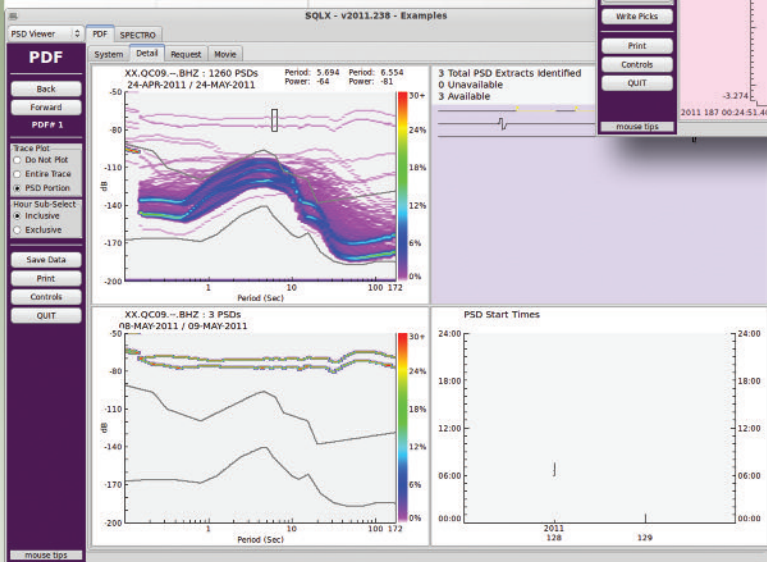
# SQLX

SCREEN CAPTURES

Three days of digitizer noise



One month of data for a single channel



Magnified portion of time-domain data corresponding to above